

Nora

Design Luca Erba - 2022

Storage unit



Description

In Nora storage unit the uniqueness of marble meets the refined texture of canework, enhancing curved lines and a strong personality. The vertical elements that support the structure, touch the top and suggest the idea of creating a slight pressure that modifies the surface in a very delicate way, creating a unique play of joints.

Materials

Canework, Lacquer, Marble

Dimensions

200 W x 57 D x 73 H cm (NORA.13300)

240 W x 57 D x 73 H cm (NORA.13400)

HESSENTIA | CORNELIO CAPPELLINI

Nora

Storage unit

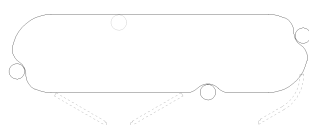
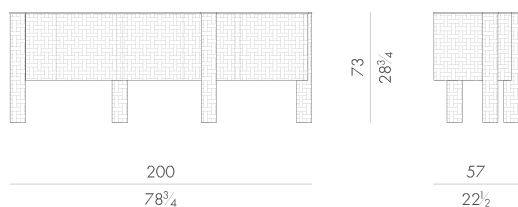


HESSENTIA | CORNELIO CAPPELLINI

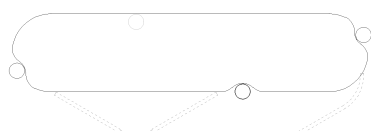
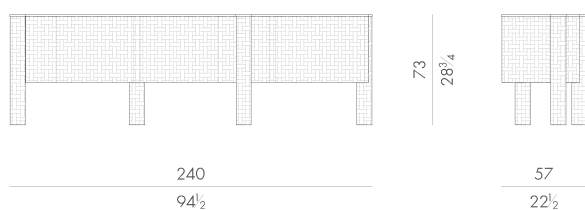
Nora

Storage unit

NORA.13300



NORA.13400



Nora

Storage unit

THE WORLD OF MATERIALS

Marble top



MA41M Matt Frozen



MA28 Dover White



MA40 Blue Deep



MA32 Calacatta Brazil

Canework structure



PA14 Semi glossy sahara



PA15 Semi glossy steel



PA16 Semi glossy azure

Nora

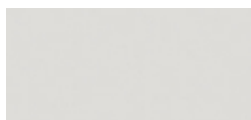
Storage unit

THE WORLD OF MATERIALS

Lacquered parts



FP33 Glossy light grey



FP33M Matt light grey



FP25 Glossy blue-green



FP25M Matt blue-green



FP26 Glossy brick red



FP26M Matt brick red

Nora

Storage unit

SUGGESTED MATCHES

Marble top



MA41M Matt Frozen



MA41M Matt Frozen



MA40 Blue Deep



MA40 Blue Deep



MA32 Calacatta Brazil



MA32 Calacatta Brazil

Canework structure



PA15 Semi glossy steel



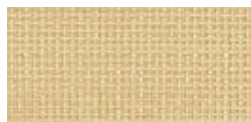
PA15 Semi glossy steel



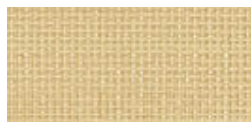
PA16 Semi glossy azure



PA16 Semi glossy azure



PA14 Semi glossy sahara

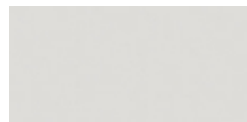


PA14 Semi glossy sahara

Lacquered parts



FP33 Glossy light grey



FP33M Matt light grey



FP25 Glossy blue-green



FP25M Matt blue-green



FP26 Glossy brick red



FP26M Matt brick red